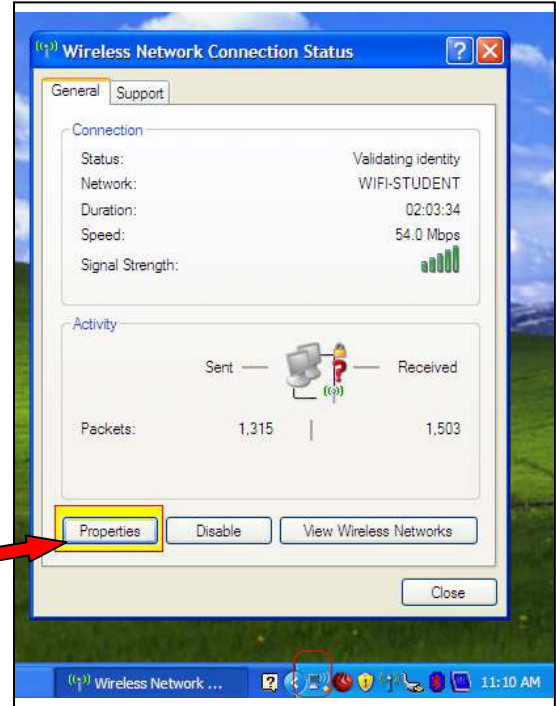
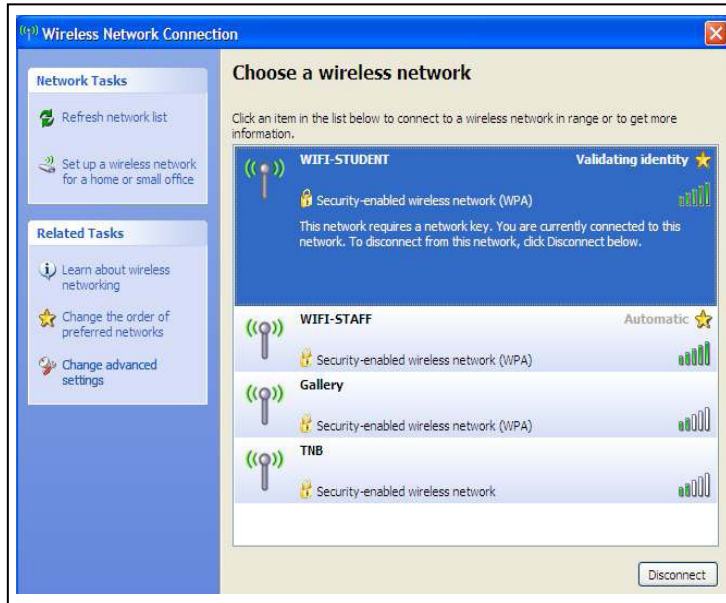


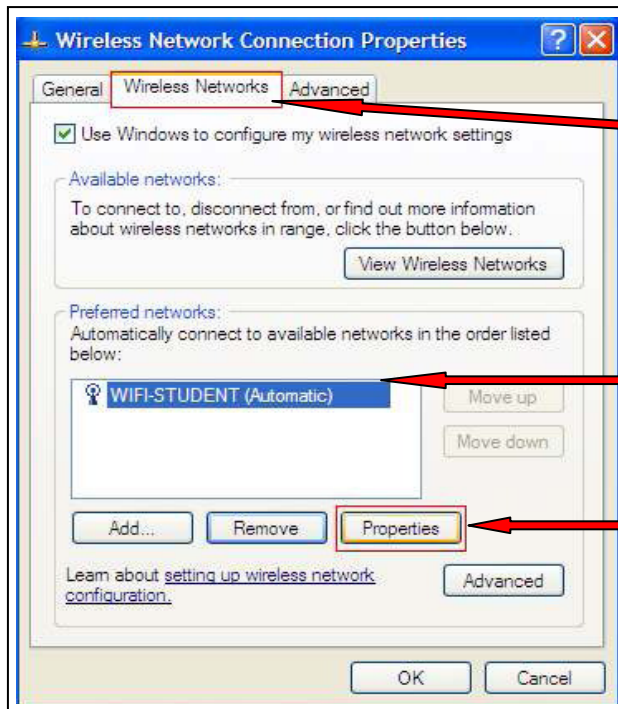
How to connect to WIFI-STUDENT for Windows XP

1. Double click to **WIFI-STUDENT** to open the Wireless Network Connection Status



2. Click Properties

3. At Wireless Network Connection Properties:

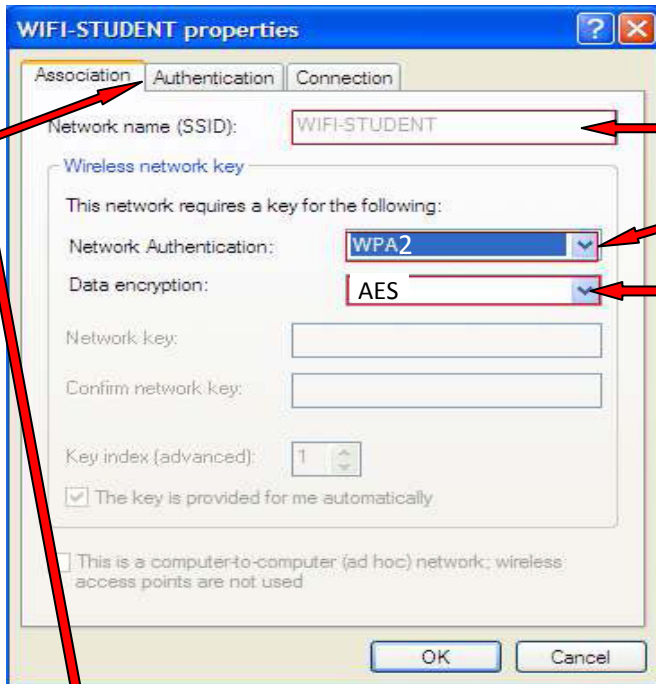


Choose Wireless Networks

Select WIFI-STUDENT (Automatic)

Then Click Properties

4. WIFI-STUDENT properties.



1. Network name (SSID) : WIFI-STUDENT

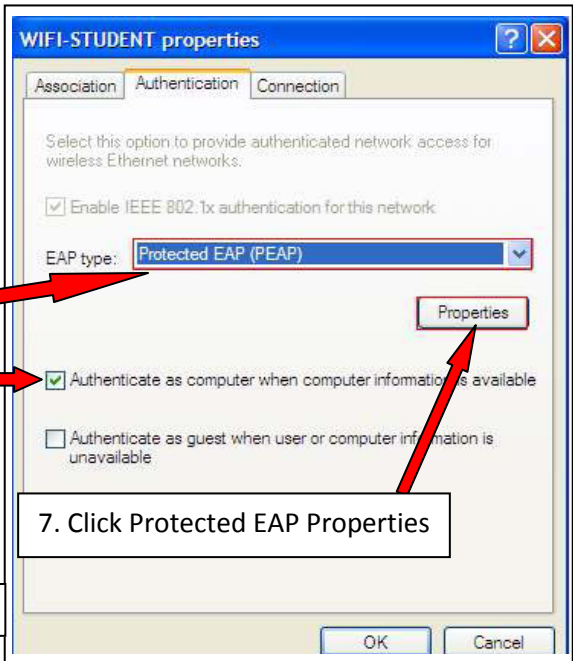
2. Choose WPA2

3. Choose AES

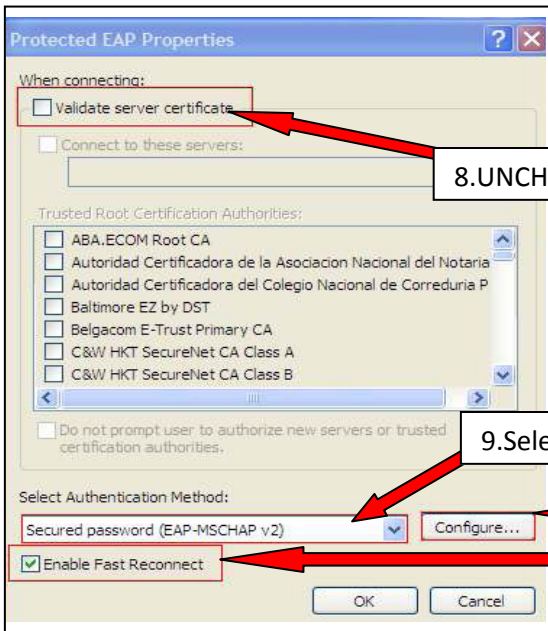
4. Click Authentication Tab

5. Change the EAP type to Protected EAP (PEAP)

6. Check



7. Click Protected EAP Properties



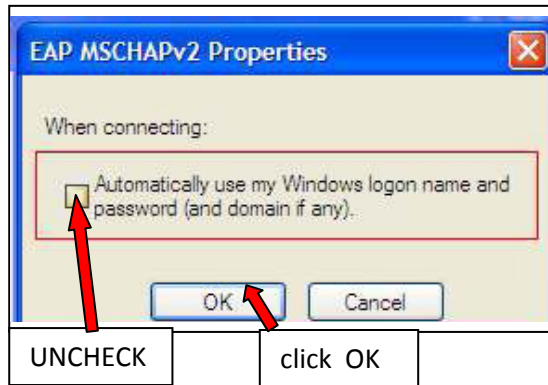
8. UNCHECK

9. Select Secured password (EAP-MSCHAP v2)

11. CLICK Configure

10. Check

7. EAP MSCHAPv2 Properties



8. Click on the WIRELES NETWORK CONNECTION balloon



9. Insert your student id and password. Eg:

